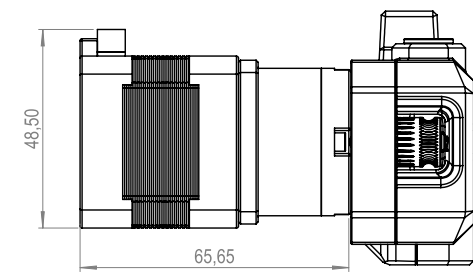
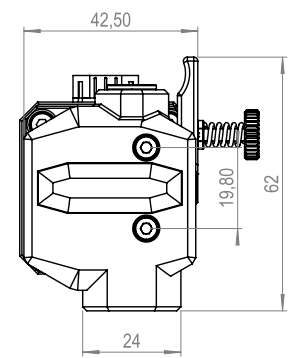
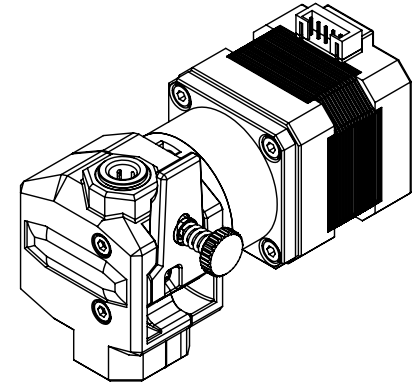
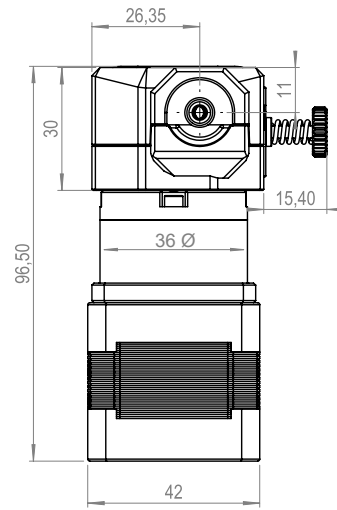


#extruder EXT_UNI_3.0

SKU



NAME QR™ Extruder
 TYPE Extruder
 SKU EXT_UNI_3.0

EXTRUDER SPECIFICATIONS #01/02

Specifications

E-Steps	492.45 @ 1/16 microstepping. For Klipper rotation_distance: 6.498
Drive Wheels	Hardened Steel
Top Fitting Tube OD	6.10mm
Materials Compatibility	Abrasive, Rigid, Semi-flexible, Flexible and Soft
Mounting	Ring mounting around gearbox 36mm Ø Front 2 points.
Max Tightening Torque	0.3Nm
Housing	PA12
Max Working Temperature	80°C @ 1200mA
Weight	475g
Push Force	>10kg

Comments

See drawing above for more details about mounting points location and thread depth

Higher currents may be used on lower working temperatures

Net weight

Specifications

Tension	Adjusted with thumbscrew and spring
Max Peak Current 1.8A	Recommended Current 1200mA
Stepper Motor	Geared 40mm Nema 17 1.8 degree
Motor Insulation Class	Class-B
Motor Connector	S6B-PH-K-S
Filament Diameter	2.85-3.00mm
Lubrications	Berutox FB22
CE Certified	Yes
RoHS	Yes
Reach	Yes

Comments

Tighten fully without filament loaded, back screw out four half turns. Fine tune depending on your setup.

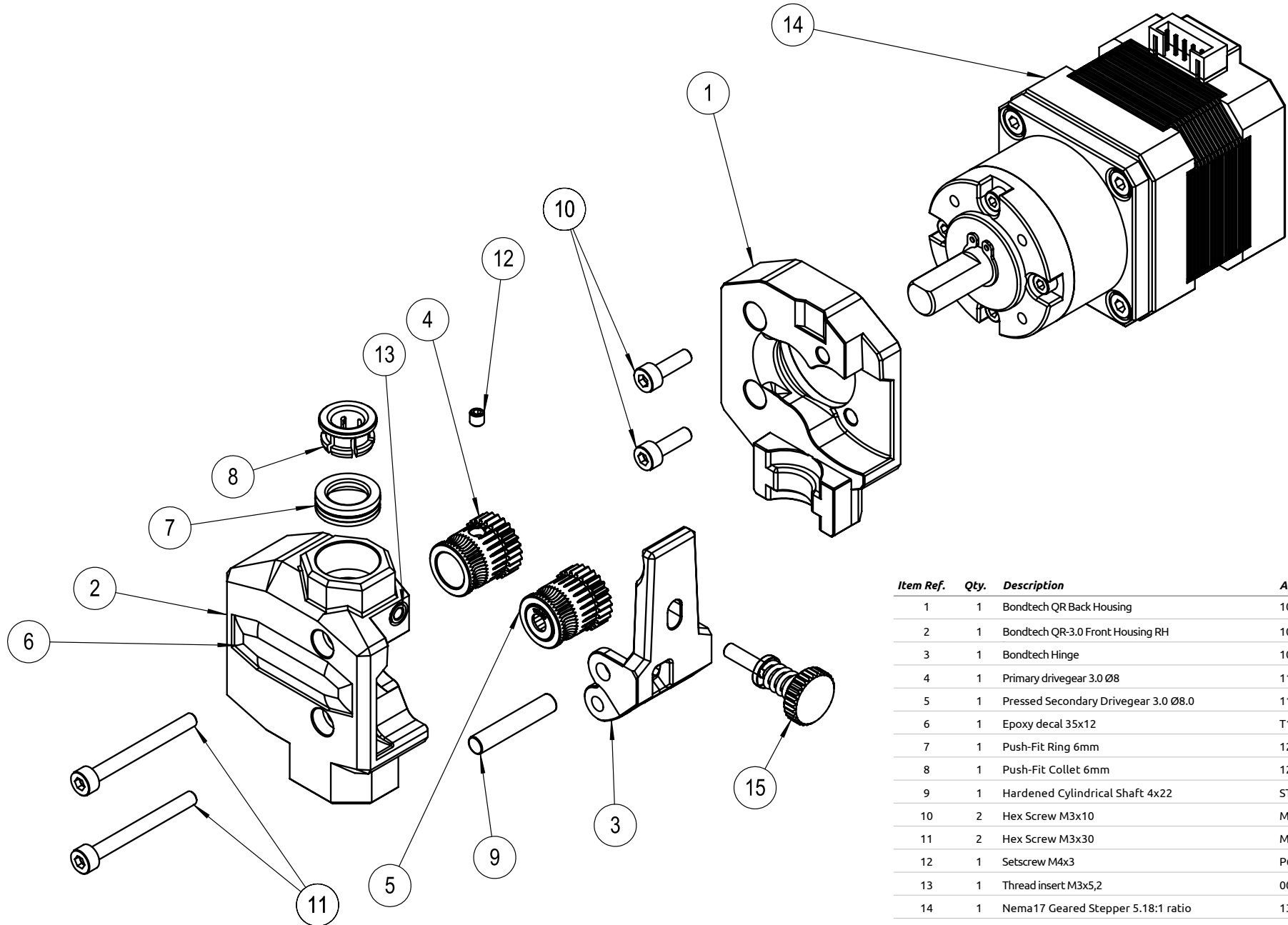
Gearing ratio 5.18:1

To use with cable connector of type PHR-6 or equivalent

Visual inspection every 100 print hours. Clean and apply new lubrication on the needle bearings.

#extruder

EXT_UNI_3.0
SKU



Item Ref.	Qty.	Description	Article Number
1	1	Bondtech QR Back Housing	10034-1
2	1	Bondtech QR-3.0 Front Housing RH	10036-2
3	1	Bondtech Hinge	10034-3
4	1	Primary drivegear 3.0 Ø8	11004
5	1	Pressed Secondary Drivegear 3.0 Ø8.0	11006-T
6	1	Epoxy decal 35x12	T1004
7	1	Push-Fit Ring 6mm	12001
8	1	Push-Fit Collet 6mm	12017
9	1	Hardened Cylindrical Shaft 4x22	STIFT4X22M6
10	2	Hex Screw M3x10	M3X100BEH
11	2	Hex Screw M3x30	M3X300BEH
12	1	Setscrew M4x3	P6SSM4X3
13	1	Thread insert M3x5,2	001/M3
14	1	Nema17 Geared Stepper 5.18:1 ratio	13001
15	1	Thumbscrew Assembly	15026