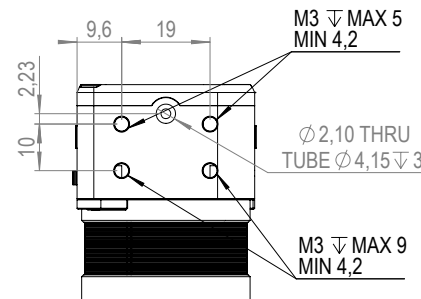
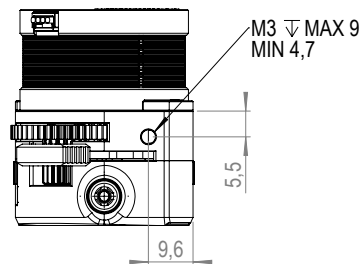
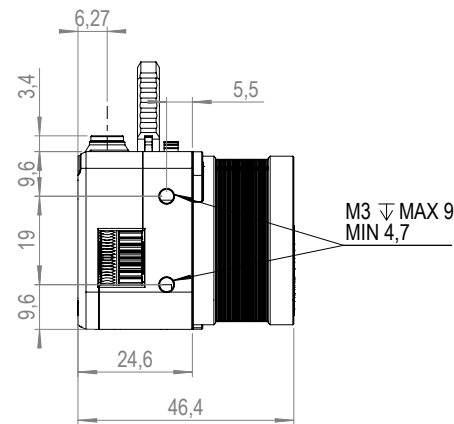
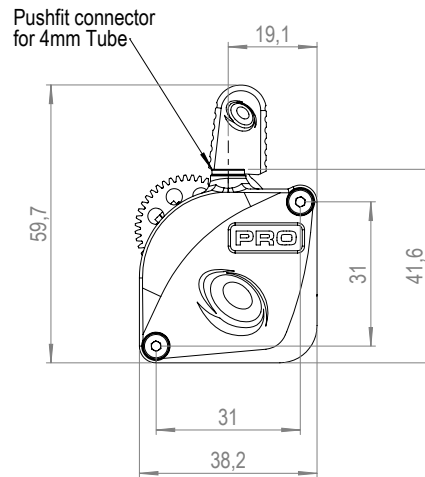


#extruder

EXT01LGX41012

SKU



NAME	LGX Lite Pro Large Gears eXtruder
TYPE	Extruder
SKU	EXT01LGX41012

Specifications	Comments
ESTEP	800 @ 1/16 micro stepping 1600 @ 1/32 micro stepping
Drive Wheels	Hardened Steel
Top Fitting Tube OD	4.00 mm
Materials Compatibility	Abrasive, rigid, semi-flexible, flexible and soft
Mounting	bottom (4 points); right (2 points), left (1 point), front to motor (2 points), top (1 point)
Max Tightening Torque	0.3Nm
Housing	PA 12 GF
Working Temperature	Up to 100°C
Weight	187 g
Motor Insulation Class	Class-H

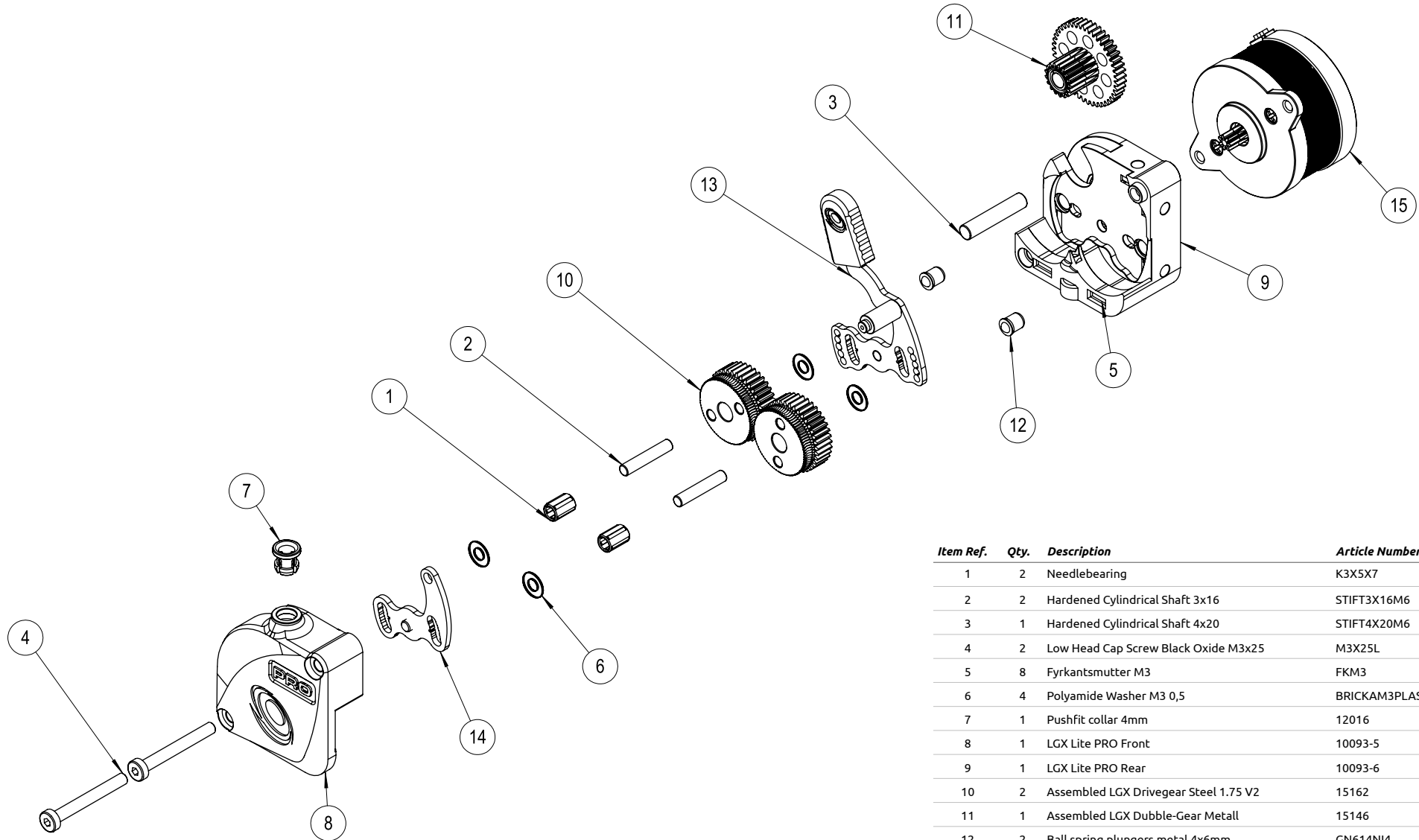
Specifications	Comments
Comments	Nitrocarburized SS1914, Surface coating
Comments	See drawing above for more details about mounting points location and thread dept
Comments	SLS printed housings with glass filled Nylon (PA12 GF)
Comments	Motor selfheating ~80°C @ 1000mA + Chamber temp must not exceed 180°C
Comments	Net weight
Comments	Up to 180°C

Specifications	Comments
Tension	Adjustable with 4 fixed positions
Max Peak Current 1.0A	Recommended current 550-650 mAh RMS
Stepper Motor	Nema14 Round Stepper 22mm Ø36mm
Motor Connector	JST-XH 4-pin connector
Filament Diameter	1.75 mm
Lubrications	Berutox FB22
Ce Certified	Yes
RoHS	Yes
REACH	Yes

Specifications	Comments
Comments	0 Open; 1-2 Rigid Materials. 2-3 Semi-Flexible, 4 Flexible/Soft
Comments	Pushing force @ 550mAh RMS ~7kg (70N)
Comments	Visual inspection every 100 print hours. Clean and apply new lubrication on the gears

#extruder

EXT01LGX41012
SKU



Item Ref.	Qty.	Description	Article Number
1	2	Needlebearing	K3X5X7
2	2	Hardened Cylindrical Shaft 3x16	STIFT3X16M6
3	1	Hardened Cylindrical Shaft 4x20	STIFT4X20M6
4	2	Low Head Cap Screw Black Oxide M3x25	M3X25L
5	8	Fyrkantsmutter M3	FKM3
6	4	Polyamide Washer M3 0,5	BRICKAM3PLAST
7	1	Pushfit collar 4mm	12016
8	1	LGX Lite PRO Front	10093-5
9	1	LGX Lite PRO Rear	10093-6
10	2	Assembled LGX Drivegear Steel 1.75 V2	15162
11	1	Assembled LGX Dubble-Gear Metall	15146
12	2	Ball spring plungers metal 4x6mm	GN614NI4
13	1	LGX Lite PRO Lever 4 Position Long	03MCH14PLT00027
14	1	LGX Lite PRO Lever 4 Position Short	03MCH14PLT00028
15	1	LGX Lite PRO Stepper Motor	01LCT00STM00008

EXTRUDER EXPLODED VIEW #02/02