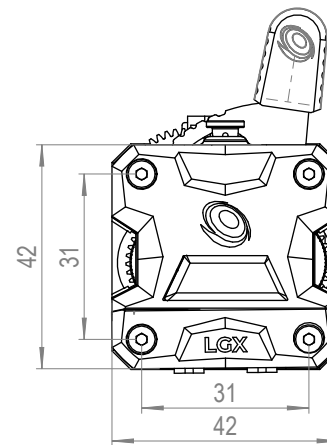
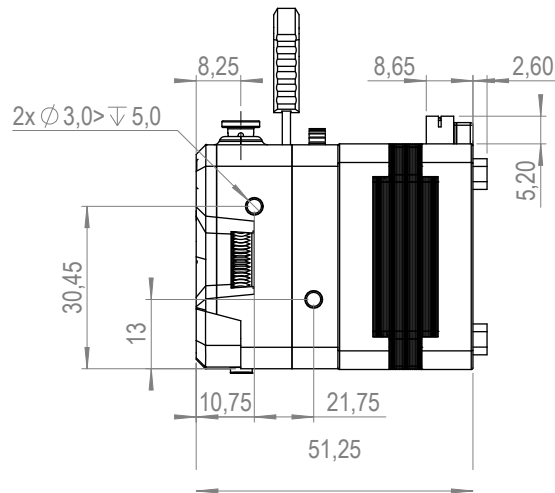
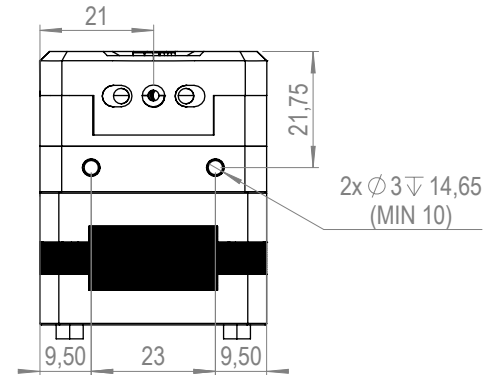


#extruder

EXT-LGX
SKU



NAME LGX Large Gears eXtruder

TYPE Extruder

SKU EXT-LGX

Specifications

E-Steps	400 @ 16-bit micro stepping 800 @ 32-bit micro stepping
Drive Wheels	Hardened Steel
Top Fitting Tube OD	4.10 mm
Materials Compatibility	Abrasive, rigid, semi-flexible, flexible and soft
Mounting	bottom (2 points); right (2 points), left (2 point), front to motor (3 points).
Max Tightening Torque	0.3Nm
Housing	PA 12 GF
Working Temperature	Up to 100°C
Net Weight	Extruder 76g + Motor 151g = Total 227g
Motor Insulation Class	Class-H
Push Force	4-7.5kg

Comments

Nitrocarburized SS1914, Surface coating
See drawing above for more details about mounting points location and thread dept
SLS printed housings with glass filled Nylon (PA12 GF)
Motor selfheating ~80°C @ 1000mA + Chamber temp must not exceed 180°C
Up to 180°C

Specifications

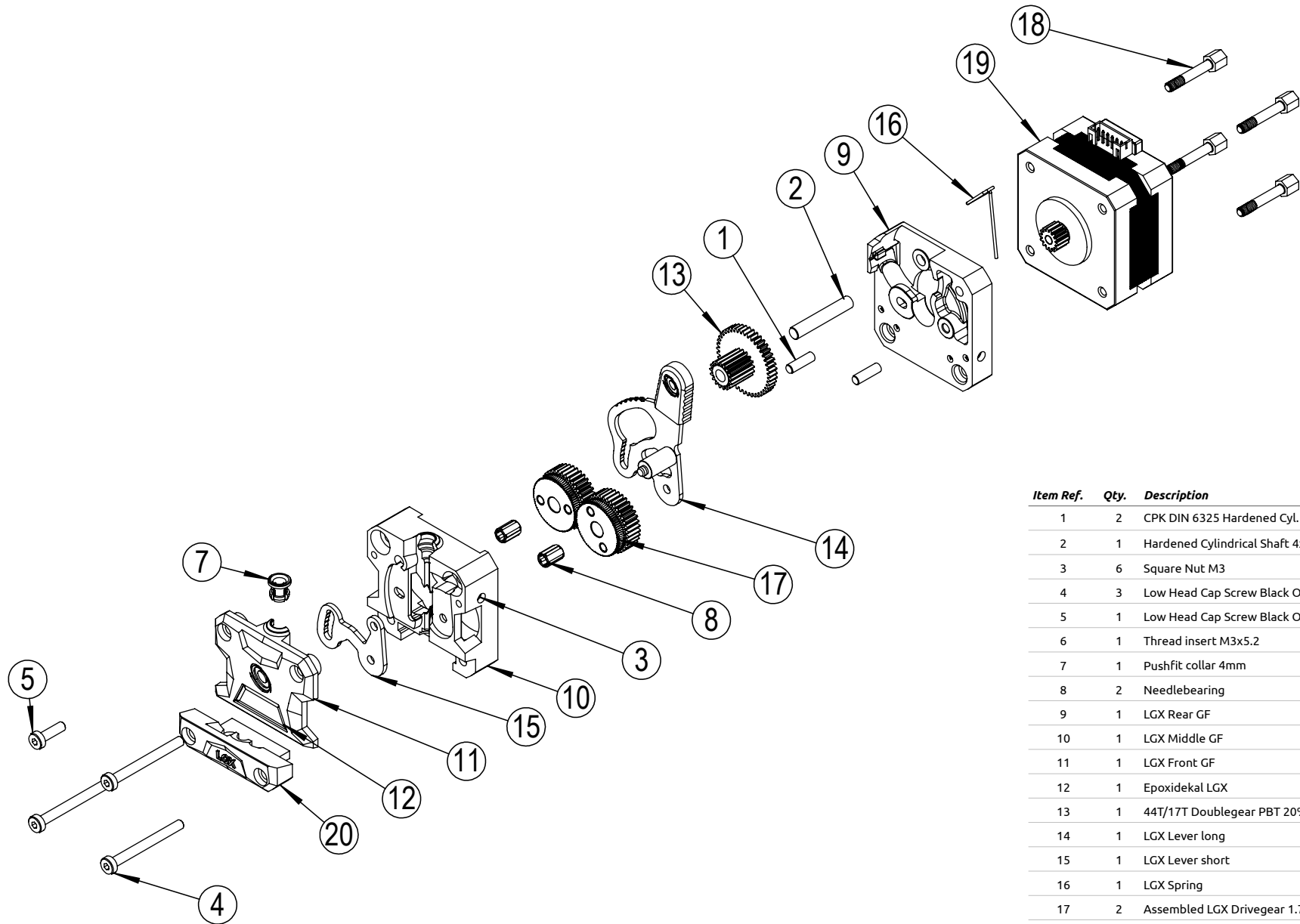
Tension	Adjustable with 5 fixed positions
Recommended Current	450-600mA
MAX Peak Current	1.0A (Not Recommended)
Stepper Motor	Nema17 25mm pancake stepper motor
Motor Connector	S6B-PH-K-S connector
Filament Diameter	1.75 mm
Lubrications	Berutox FB22
CE Certified	Yes
RoHS	Yes
REACH	Yes

Comments

0 Open • 1-2 Rigid Materials 2-3 Semi-Flexible • 3-5 Flexible/Soft
Never use more than 90% of MAX Peak Current.

#extruder EXT-LGX

SKU



Item Ref.	Qty.	Description	Article Number
1	2	CPK DIN 6325 Hardened Cyl. Pin	
2	1	Hardened Cylindrical Shaft 4x24	STIFT4X24M6
3	6	Square Nut M3	
4	3	Low Head Cap Screw Black Oxide M3x30	M3X30L
5	1	Low Head Cap Screw Black Oxide M3x10	M3X10L
6	1	Thread insert M3x5.2	001/M3
7	1	Pushfit collar 4mm	12016
8	2	Needlebearing	K3X5X7
9	1	LGX Rear GF	10098-03
10	1	LGX Middle GF	10098-02
11	1	LGX Front GF	10098-01
12	1	Epoxidekal LGX	T1005
13	1	44T/17T Doublegear PBT 20% GF	15070
14	1	LGX Lever long	15094
15	1	LGX Lever short	15095
16	1	LGX Spring	15079
17	2	Assembled LGX Drivegear 1.75	15134
18	4	Hex stud screw M3x18	M3X18STUDSOBEH
19	1	Nema17 Pancake Stepper 25mm	13007
20	1	LGX Direct Drive Interface Plug	10073-4